

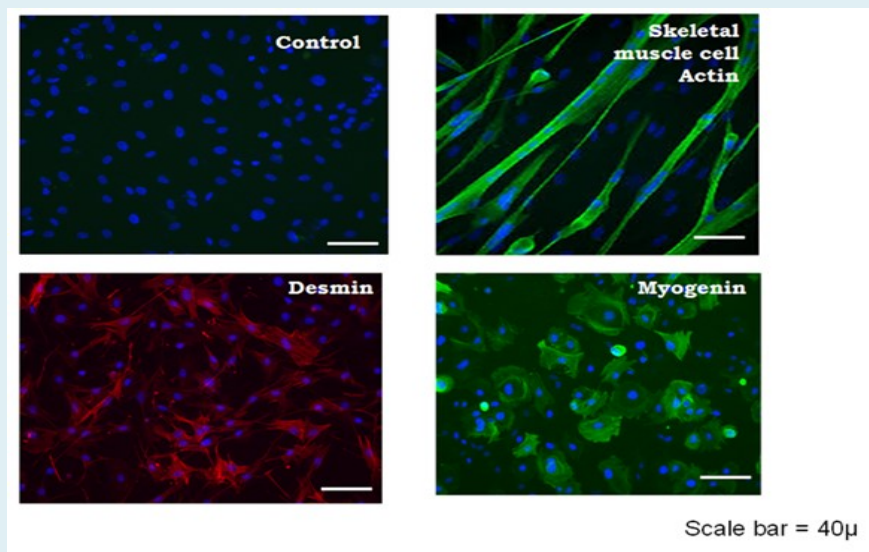
3-D Culture System for the Production of Meat from Chicken Satellite Cells

Salient features

- Isolation of chicken satellite cells (CD45-negative and $\alpha 7\beta 1$ - positive) from pectoralis muscles.
- Designing a 3-dimensional culture system using polyethylene terephthalate (PET) fibres to expand chicken satellite cells.
- Differentiation of chicken satellite cells into skeletal muscle cells in three dimensional scaffold.

Advantages

- ✓ Skeletal muscle cells serve as vital meat.
- ✓ Meets market demand.



Process Technology / Product developed by

Dr. Satyanarayana Rentala, Department of Biotechnology
GITAM Institute of Technology, GITAM University, Visakhapatnam, Andhra Pradesh
rsn1417@gmail.com, rsn@gitam.edu, registrar@gitam.edu,
director_ugcaffairs@gitam.edu, chrk2020@gmail.com

Prof. K. Aruna Lakshmi, Department of Biotechnology; Prof. Ch. Rama Krishna, Department of Environmental Studies, GITAM Institute of Science, GITAM University, Visakhapatnam, Andhra Pradesh

<i>Year</i>	2013-14
<i>Source of funding</i>	MoFPI
<i>More information</i>	<p>Status of commercialization / Patent / Publication</p> <p>Rentala, S., Komarraju, A.L. and Chintala, R.K. 2014. Role of animal cell culture in environmental protection. Paper presented in the International Conference on Effects of emissions & effluents on environment, Andhra University, 30 June. .</p> <p>Rentala, S., Komarraju, A.L. and Chintala, R.K. Fibronectin and laminin enhance expansion and differentiation of chicken satellite cells. (communicated).</p> <p>Patent</p> <p>Rentala, S., Komarraju, A.L. and Chintala, R.K. An artificial niche for expansion and differentiation of muscle satellite cells. Patent has been prepared and ready to submit.</p>